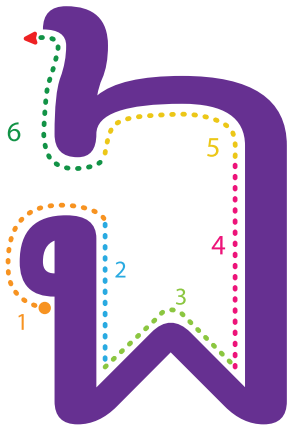


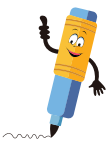
ស្រ:ពេញតួ

Your name: _____

Date: ____ / ____ / ____



ង



រៀនសរសេរអោយស្អាតដៃ

Tracing practice area for the Khmer character 'ង'. It contains four rows of handwriting lines. The first row starts with a solid 'ង' followed by five dashed 'ង' for tracing. The following three rows each contain six dashed 'ង' for tracing.

