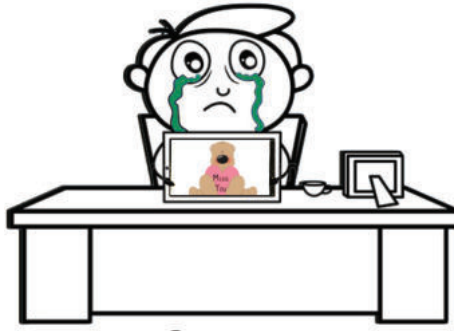
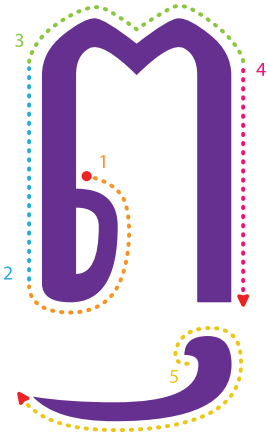


# ស្រៈពេញតួ

Your name: \_\_\_\_\_

Date: \_\_\_\_ / \_\_\_\_ / \_\_\_\_



នឹកវត្សក



រៀនសរសេរអោយស្អាតដៃ

Tracing practice area for the Khmer character 'ព' (et). It consists of three rows of six boxes each. The first row starts with a solid black 'ព' followed by five dashed 'ព' for tracing. The second and third rows each contain six dashed 'ព' for tracing.

